

## Notes

- OAH is standard unless specified.
- FINISH: Finish is low VOC thermo-cure powdercoat paint or clear lacquer. Specify three digit color suffix with "PT" finish options.
- HOUSING: Consists of spun aluminum housing clad with stainless steel or aluminum textured metal trim. Opal white acrylic diffuser.
- MOUNTING: Fixture mounts to a standard octagonal junction box.
- ETL listed to UL standards for dry and damp locations
- \*Surge protection recommended for use with D1 (Triac/Leading Edge) dimming systems.

### 1 Fixture Number

- DP-891** 5.75"H x 23.5" Dia. 32" Oah.  
**DP-893** 8"H x 29" Dia. 34" Oah.  
**DP-895** 9.75"H x 34.25" Dia. 36" Oah.

### 2 Finish

#### Housing

- Standard Painted Finishes (PT)  
 Brushed Solid Aluminum (BA)

#### Textured metal accent trim

- Standard Painted Finishes (PT)  
 Stainless Steel (SS)

### 3 Lamping

LED options includes integral 120-277v 1-100% dimming driver compatible with 0-10v, Triac, and ELV controls. Over-current and short-circuit protected. All LEDs are 80+ CRI, 50,000 hr. L70. Wattage listed includes driver efficiency.

#### DP-891

LED Options	Lumens	Wattage
B48 Downlight + Uplight (48w)	1402 up/1533 down (delivered)	48
B48R Uplight + Downlight (48w)	2804 up/766 down (delivered)	48

#### DP-893

LED Options	Lumens	Wattage
B96 Downlight + Uplight (96w)	2804 up/3066 down (delivered)	96
B96R Uplight + Downlight (96w)	5608 up/1533 down (delivered)	96

#### DP-895

LED Options	Lumens	Wattage
B128 Downlight + Uplight (128w)	2804 up/4599 down (delivered)	128
B128R Uplight + Downlight (128w)	8412 up/1533 down (delivered)	128

### 4 LED Color Temp

- 27: 2700K  
 30: 3000K  
 35: 3500K  
 40: 4000K

### 5 LED Dimming

- D0: 0-10v  
 D1: Triac (Leading Edge)\*  
 D2: ELV (Trailing Edge)

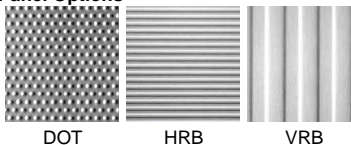
### 6 Voltage Options

- 120: 120 volt  
 277: 277 volt (Not available with incandescent lamp options)

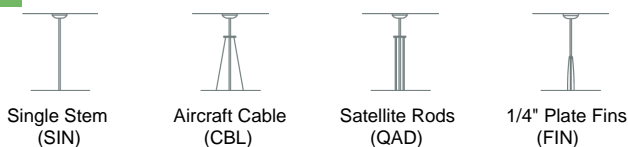
### 7 Diffuser Options

- WH: Opal White Acrylic

### 8 Panel Options



### 9 Stem Options



1	2	2	3	4	5	6	7	8	9
Fixture #	Housing (Finish)	Textured metal (Finish)	Lamping	Color Temp	Dimming	Voltage	Diffuser	Panel	Stem