

## Notes

- FINISH: Finish is low VOC thermo-cure powdercoat paint or clear lacquer. Specify three digit color suffix with "PT" finish options.
- HOUSING: Consists of spun aluminum housing clad with stainless steel or aluminum textured metal trim. Opal white acrylic diffuser.
- MOUNTING: Fixture mounts to a standard octagonal junction box.
- ETL listed to UL standards for dry and damp locations
- \*Surge protection recommended for use with D1 (Triac/Leading Edge) dimming systems.

**1 Fixture Number**  
**DC-890** 6.5"H x 23.5" Dia.

**2 Finish**  
**Housing**  
Standard Painted Finishes (PT)  
Brushed Solid Aluminum (BA)

**Textured metal accent trim**  
Standard Painted Finishes (PT)  
Stainless Steel (SS)

**3 Lamping**  
All LED options include integral 120-277v 1-100% dimming drivers compatible with 0-10v, Triac, and ELV controls. Over-current and short-circuit protected. All LEDs are 80+ CRI, 50,000 hr. L70. Wattage listed includes driver efficiency.

### DC-890

LED Options	Lumens	Wattage
C26	2178 (delivered)	26
C38	3118 (delivered)	38

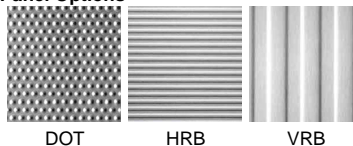
**4 LED Color Temp**  
27: 2700K  
30: 3000K  
35: 3500K  
40: 4000K

**5 LED Dimming**  
D0: 0-10v  
D1: Triac (Leading Edge)\*  
D2: ELV (Trailing Edge)

**6 Voltage Options**  
120: 120 volt  
277: 277 volt (Not available with incandescent lamp options)

**7 Diffuser Options**  
WH: White Acrylic

### 8 Panel Options



DOT

HRB

VRB

1

Fixture #

2

Housing  
(Finish)

2

Textured metal  
(Finish)

3

Lamping

4

Color Temp

5

Dimming

6

Voltage

7

Diffuser

8

Panel