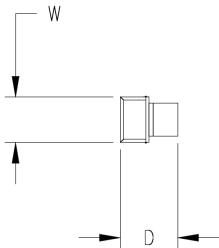
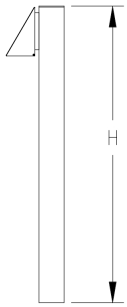




- 1 Fixture Number**
B-918 5.5"W x 6"H 36" Oah.
- 2 Finish**
Housing
Standard Painted Finishes (PT)
- 3 Lamping**
Includes integral 120-277v 1-100% dimming driver compatible with 0-10v, Triac, and ELV controls. Over-current and short-circuit protected. All LEDs are 80+ CRI, 50,000 hr. L70. Wattage listed includes driver efficiency.

LED Options	Lumens	Wattage
E13 Downlight	1550 (initial)	13

- 4 LED Color Temp**
27: 2700K
30: 3000K
35: 3500K
40: 4000K
- 5 LED Dimming**
D0: 0-10v
D1: Triac (Leading Edge)*
D2: ELV (Trailing Edge)
- 6 Voltage Options**
120: 120 volt
277: 277 volt (Not available with incandescent lamp options)
- 7 Diffuser Options**
CRA: Clear refractive acrylic lens



Notes

- HOUSING: Formed aluminum housing with cast aluminum backplate. High transmission clear refractive acrylic lens.
- FINISH: Finish is low VOC thermo-cure powdercoat paint. Specify three digit color suffix with "PT" finish options.
- DRIVER: Integral LED driver compatible with 0-10v, Triac, or ELV dimming.
- MOUNTING: Aluminum post supplied with base plate mounting. Standard height is 36".

1	2	3	4	5	6	7
Fixture #	Housing (Finish)	Lamping	Color Temp	Dimming	Voltage	Diffuser