



## 926 New **LED** DOWNLIGHT BOLLARD

Design  
Sustainability  
Value

### COMPANIONS



### FEATURES

- Fresh take on cylinder shape.
- Exclusive screened gradient on reflector reduces glare.
- Curved reflector throws light side-to-side.

### MATERIALS

- Solid aluminum construction
- Satin Ice acrylic diffuser
- Reflector is high reflectance matte finish

### FINISHES

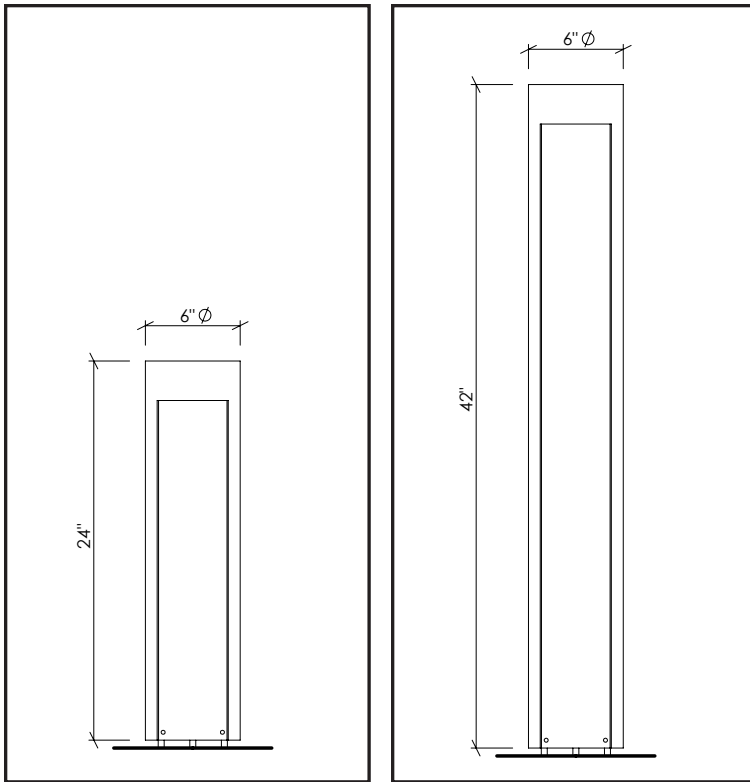
- |                              |  |
|------------------------------|--|
| <b>SGB</b> Semi-gloss black  | <b>SGBZ</b> Semi-gloss bronze          |
| <b>SGW</b> Semi-gloss white  | <b>CCP</b> Custom Color Painted finish |
| <b>SGS</b> Semi-gloss silver |  |

### LAMPING

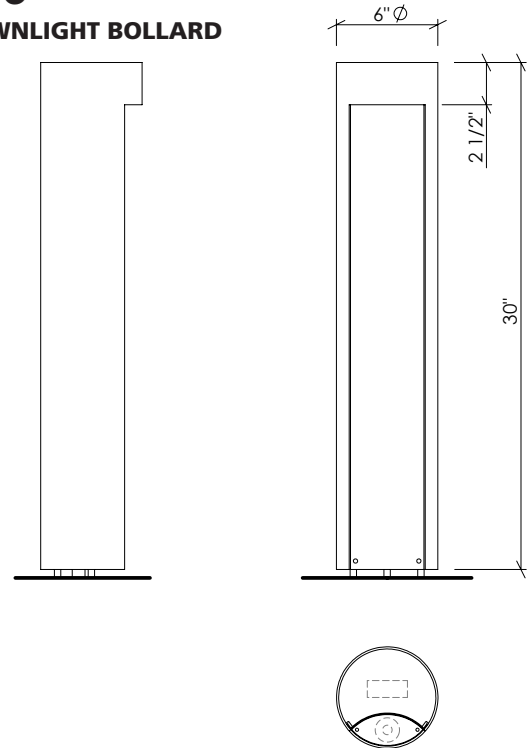
LED: 1-11W LED array, 1690 lumens, 3000K, 80CRI or 1-16W LED array, 2415 lumens, 3000K, 80CRI. LED array is included, is mounted in a holder and is replaceable.

### DRIVER

Integral HPF electronic driver, 120/277, 0-10V dimming. 2-wire triac dimming available for 120V.

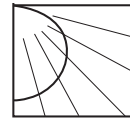


# 926 DOWNLIGHT BOLLARD

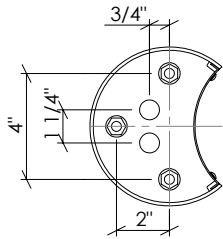


### OPTIONAL HEIGHTS

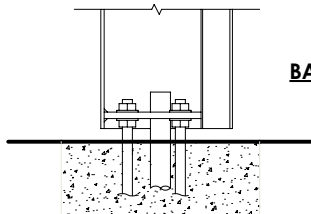
The standard, or default height, is 30". A shorter 24" and taller 42" heights are optional. Other heights available by specification.



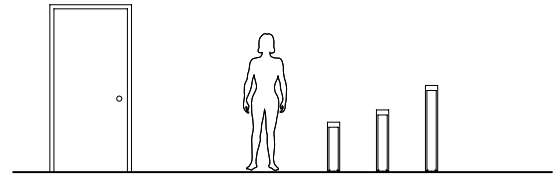
**PHOTOMETRICS**  
 Light Lab Report LLI-18053-2  
 Delivered lumens: 955  
 Efficiency: 51%  
 Efficacy: 53.7 lm/W



**PLAN SECTION**



**BASE SECTION**



## SPEC GUIDE SAMPLE SPEC:

CAT#	LAMPING	VOLT	FINISH	OA
<input type="checkbox"/> 926	<input type="checkbox"/> LED/11	<input type="checkbox"/> 120	<input type="checkbox"/> SGB	<input type="checkbox"/> 30" STD
	<input type="checkbox"/> LED/16		<input type="checkbox"/> SGW	<input type="checkbox"/> 24"
			<input type="checkbox"/> SGS	<input type="checkbox"/> 42"
			<input type="checkbox"/> SGBZ	<input type="checkbox"/> SPECIFY
			<input type="checkbox"/> CCP	



Our fixtures are handcrafted here in the USA using the highest quality materials.

