

806

TABLE & FLOOR LAMP

Design
Sustainability
Value



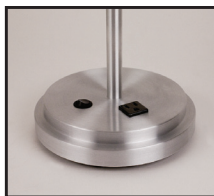
806-TL Shown with Metal Dome and Satin Aluminum finish.



Shown with Luminous Dome & Satin Brass.



Dimming switch.



FEATURES

- Clean, classic design.
- Soft, glare-free indirect task/ambient light.
- Choice of luminous or metal dome.
- Optional Convenience Outlet shown at left.

MATERIALS

- Solid brass or aluminum metal work, hand finished.
- Luminous shade is white acrylic with a matte finish.
- White or black cord & plug.

FINISHES

- SAL** Satin Aluminum
SB Satin Brass
AB Antique Brass

Standard metal finishes are hand satined and either waxed or sealed with a water-based clear coat. Other metal finishes are available. Contact factory.

LAMPS

Two CF 26 triple twin tube 4-pin, 2700K, non-amalgam lamps supplied with table and floor lamps.

Note that this is the maximum lamping.

BALLAST

Electronic HPF, Class P, Sound Rated A, with end-of-lamp-life circuitry and thermal protection. Electronic dimming ballast available.

ECO INFO

METALS: Aluminum and brass with the highest available recycled content for lower embodied energy. Both metals are valuable and recyclable at the end of the product's useful life. For more information see "GENERAL INFO"

FINISHING: Aluminum and Antique Brass finishes are sealed with a hand-applied bees wax. No paint or lacquer is used in order to avoid pollution associated with the manufacture and application of these substances. Satin Brass is clear-coated with a very low VOC water-based coating. Paint finishes are low VOC and oven cured.

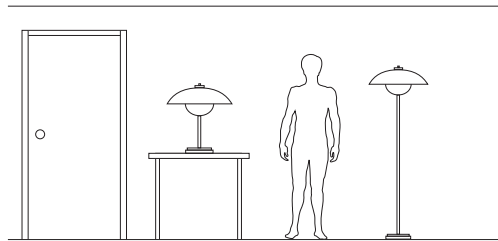
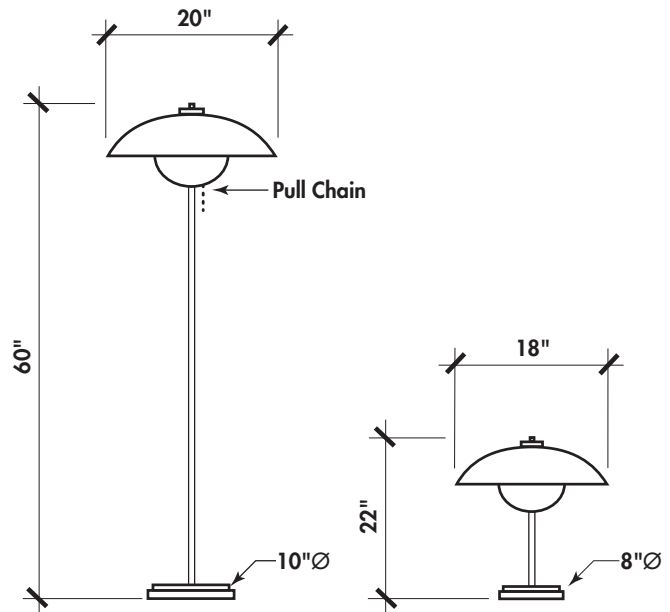
ENERGY: Designed exclusively for compact fluorescent lamps using HPF electronic ballasts.



806-FL Shown with Satin Aluminum Finish.

806-FL FLOOR LAMP

The floor lamp version of this design offers the same comfortable energy-efficient illumination as the table lamp. While it is slightly larger in scale, it offers the same finishes and the choice of metal or luminous dome.



OPTIONS

DOMES: Choice of Luminous Dome, specify suffix **LD**, or Metal Dome, specify suffix **MD**. Metal dome is painted white on the underside.

FAUX ALABASTER: Luminous dome available with hand-applied finish. Specify **FAUX**.

DIMMING: Electronic dimming ballast with 100-15% dimming range.

CORD: Two conductor cord with polarized plug available in black or white. Specify **BLK** or **WHT**.

CONVENIENCE OUTLET: Electrical power outlet integral to the base available. Specify **CO**. (See photo on first catalog page.)

VARIATIONS / MODIFICATIONS

- Mixed or special finishes
- Variation in overall height

NOTE: Both the table lamp & floor lamp are available for fixed-base mounting and with or without a switch.

SPEC GUIDE SAMPLE SPEC: 806-TL-CF2/26-SB-LD-WHT-FAUX

CAT#	LAMP	FINISH	DOMES	CORD	OPTIONS
<input type="checkbox"/> 806-TL	<input type="checkbox"/> CF2/26	<input type="checkbox"/> SAL	<input type="checkbox"/> LD	<input type="checkbox"/> BLK	<input type="checkbox"/> FAUX
<input type="checkbox"/> 806-FL		<input type="checkbox"/> SB	<input type="checkbox"/> MD	<input type="checkbox"/> WHT	<input type="checkbox"/> DIM
		<input type="checkbox"/> AB			<input type="checkbox"/> CO (Conv. Outlet)



**LIGHTING
FIXTURES**



Our fixtures are handcrafted here in the USA using the highest quality materials.

