

UPDATED 4/14

712 ADA LED Optional

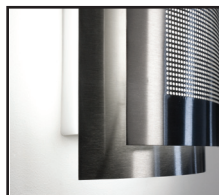
**LUMINOUS SHIELD
WET LOCATION**

Design
Sustainability
Value

DESIGN: RANDY BORDEN



Shown in Natural Bronze.



FEATURES

- ADA compliant
- Bold design features natural metals
- Available with optional perf shield (ADA)

ECO INFO

METALS: Metal parts have the highest available recycled content for lower embodied energy and are valuable and recyclable at the end of the products useful life. For more information see "GENERAL INFO"

FINISHING: Solid, natural metal finishes are hand satined. No paint or lacquer is used in order to avoid pollution associated with the manufacture and application of these substances. Paint finishes are low VOC and oven cured..

ENERGY: Designed exclusively for compact fluorescent lamps using HPF electronic ballasts or LEDs.

MATERIALS

- Solid bronze or stainless steel metalwork.
- Luminous shield is white acrylic.

FINISHES

- NBZ** Natural Bronze
- SSS** Satin Stainless Steel
- CCP** Custom Color Painted finish

Standard metal finishes are hand satined. Other metal finishes are available. Contact factory.

LAMPING

2-CF13TT, 2Gx7 base or 2-CF26W DTT, G24q base. Lamps not included.

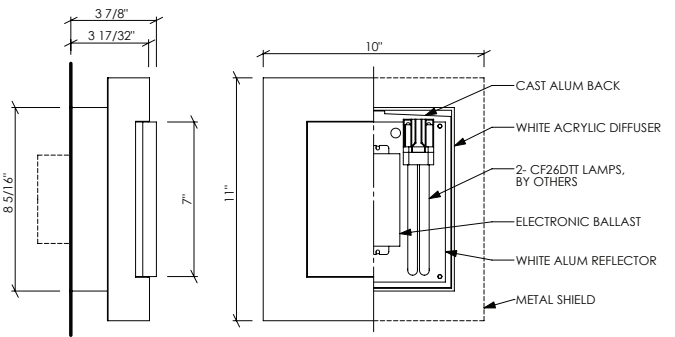
LED: 1-10W array, 1060 lumens, 3000K & 80CRI. LED array is included in a holder and is replaceable.

BALLAST/DRIVER

CF: Integral electronic HPF, 120V/277V.
LED: Integral HPF electronic, 120/277V and is 0-10V dimmable. 2-wire triac dimming available for 120V.



712 WET LOCATION

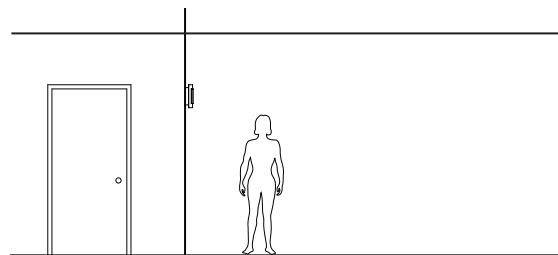


Shown in Satin SS with optional perf shield.

OPTIONS

SHIELD: Perforated metal shield available shown above, specify **PERFNBZ** or **PERFSSS**. (ADA compliant.)

EMERGENCY BATTERY PACK: Remote mounted EBP, specify **REM**. Not available for **LED**.



VARIATIONS / MODIFICATIONS

- Special finishes
- Addition of decorative detail
- Custom laser cut patterned overlays

MOUNTING: Standard J-box or plaster ring.

WEIGHT: 3lbs

SPEC GUIDE SAMPLE SPEC: 712-CF2/13-120-SSS-PERFSSS

CAT#	LAMPING	VOLT	FINISH	OPTION
<input type="checkbox"/> 712	<input type="checkbox"/> CF2/13	<input type="checkbox"/> 120	<input type="checkbox"/> NBZ	<input type="checkbox"/> PERFNBZ
	<input type="checkbox"/> CF2/26	<input type="checkbox"/> 277	<input type="checkbox"/> SSS	<input type="checkbox"/> PERFSSS
	<input type="checkbox"/> LED1/10		<input type="checkbox"/> CCP	

