

UPDATED 3/15

570-25 IEM
570-37 IEM
570-49 IEM

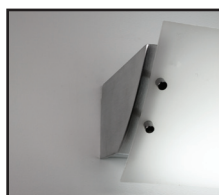


DESIGN: DAVID MALMAN

VANITY FIXTURE

Design
Sustainability
Value

COMPANION



FEATURES

- Available in 3 sizes.
- Energy efficient low glare light.
- Sand cast aluminum with 100% recycled content.
- Available with T8 or T5 lamps.

ECO INFO

METALS: Sand cast aluminum end caps are made from 100% recycled aluminum. Other aluminum parts have the highest available recycled content for lower embodied energy and are valuable and recyclable at the end of the product's useful life. For more information see "GENERAL INFO"

FINISHING: Solid, natural metal finishes are sealed with a hand-applied bees wax. No paint or lacquer is used in order to avoid pollution associated with the manufacture and application of these substances. Clear coat finishes are available. Paint finishes are low VOC and oven cured.

ENERGY: Designed exclusively for fluorescent lamps using HPF electronic ballasts.

MATERIALS

- Sand cast aluminum with 100% recycled content, hand finished.
- Luminous shield is extruded white acrylic with a matte finish.

FINISHES

SAL Satin Aluminum **CCP** Custom Color Painted finish
MW Matte White

Standard metal finishes are hand satined and waxed. Other metal finishes are available. Contact factory.

LAMPING

- 25": **CF:** 2-T8/17W or 2-T5/24HO. Lamps not included.
LED: 1-14W array, 2100 lumens, 3000K, 80+ CRI. Supplied with fixture.
- 37": **CF:** 2-T8/25W or 2-T5/39HO. Lamps not included.
LED: 3-arrays, 21W total, 3200 lumens, as above. Supplied with fixture.
- 49": **CF:** 2-T8/32W or 2-T5/50HO. Lamps not included.
LED: 2-arrays, 28W total, 4200 lumens, as above. Supplied with fixture.

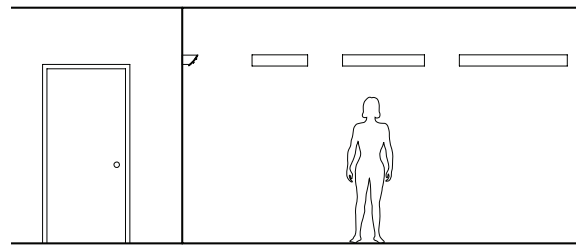
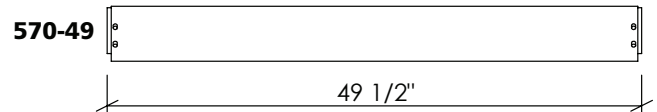
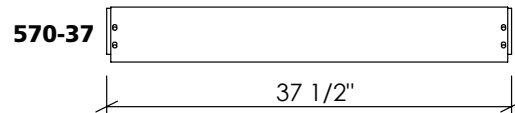
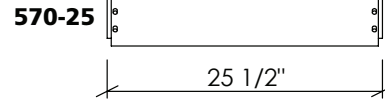
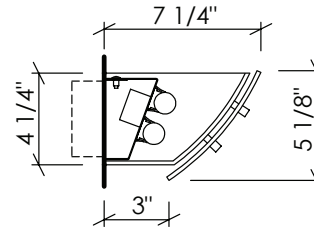
BALLAST

- CF:** Integral electronic HPF, 120V/277V.
LED: Integral driver is multi-volt 120/277 and is 0-10V dimmable.





570



PROJECT: St. Peter's Place
 HUD Housing - San Francisco, CA
ARCH: Herman Colliver Locus - San Francisco, CA
LTG DES: ALD/David Malman

OPTIONS

DIMMING: Electronic dimming ballast available.

EMERGENCY BATTERY PACK: Integral EBP, specify **IEM**.

MOUNTING: Standard J-box or plaster ring.

WEIGHT: 5 lbs

VARIATIONS / MODIFICATIONS

- Special finishes
- Addition of decorative detail
- Special lengths

SPEC GUIDE

SAMPLE SPEC: 570-T8/17-120-SAL

CAT#	LAMPING	VOLT	FINISH	OPTION
<input type="checkbox"/> 570-25	<input type="checkbox"/> T8/17	<input type="checkbox"/> 120	<input type="checkbox"/> SAL	<input type="checkbox"/> FAUX
<input type="checkbox"/> 570-37	<input type="checkbox"/> T8/25	<input type="checkbox"/> 277	<input type="checkbox"/> MW	<input type="checkbox"/> IEM
<input type="checkbox"/> 570-49	<input type="checkbox"/> T8/32		<input type="checkbox"/> CCP	
	<input type="checkbox"/> T5/24H0			
	<input type="checkbox"/> T5/39H0			
	<input type="checkbox"/> T5/50H0			
	<input type="checkbox"/> LED/16			
	<input type="checkbox"/> LED/24			
	<input type="checkbox"/> LED/32			



Our fixtures are handcrafted here in the USA using the highest quality materials.

