

106-15 IEM

LUMINOUS BOWL

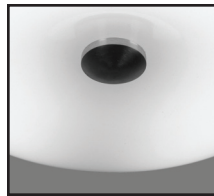
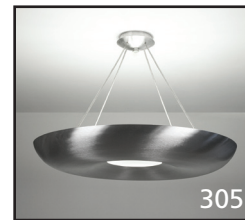
Design
Sustainability
Value

DESIGN: RANDY BORDEN



Shown in Satin Aluminum

COMPANION



FEATURES

- Low profile diffuser.
- T-5 circline lamps provide uniform luminosity.
- Unique geometry.
- Available in two sizes.

ECO INFO

METALS: Aluminum and brass with the highest available recycled content for lower embodied energy. Both metals are valuable and recyclable at the end of the product's useful life. For more information see "GENERAL INFO"

FINISHING: Aluminum and Antique Brass finishes are sealed with a hand-applied bees wax. No paint or lacquer is used in order to avoid pollution associated with the manufacture and application of these substances. Satin Brass is clear-coated with a very low VOC water-based coating. Paint finishes are low VOC and oven cured.

ENERGY: Designed exclusively for T5 circline fluorescent lamps using HPF electronic ballasts.

MATERIALS

- Solid brass or aluminum metal work, hand finished
- Luminous bowl is white acrylic with a matte finish.

FINISHES

SAL Satin Aluminum

SB Satin Brass

CCP Custom Color Painted finish

Standard metal finishes are hand satined and either waxed or sealed with a water-based clear coat. Other metal finishes are available. Contact factory.

LAMPING

106-15: 1-T5 40W or 55W Circline.

Lamp not included.

BALLAST

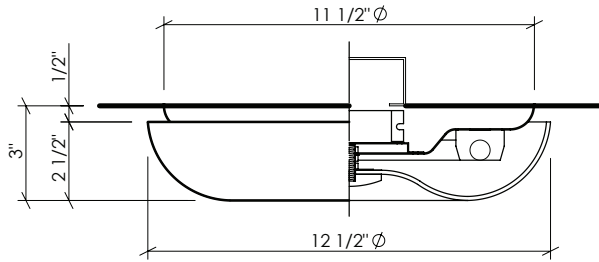
Integral electronic HPF, 120V/277V.

See "GENERAL INFO" for more detail.

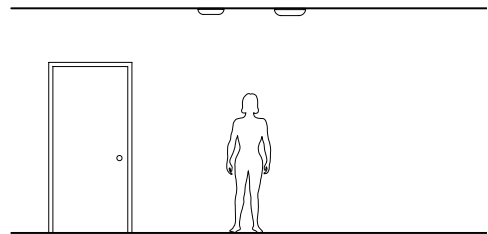


Shown with Faux finish

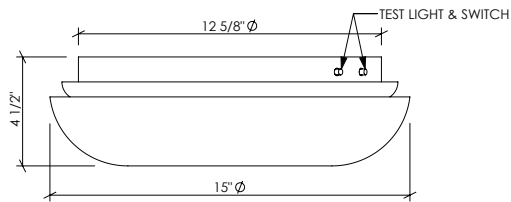
106-15



PHOTOMETRICS
Lighting Sciences Report 22410
Fixture Efficiency: 80.6%



OPTIONS
FAUX: Hand applied faux finish available.
DIMMING: Electronic dimming ballast available.
EMERGENCY BATTERY PACK: Integral **EBP** with addition of 1 1/4 deep collar. Specify **IEM**.



EBP CONFIGURATION

VARIATIONS / MODIFICATIONS

- Special finishes
- Addition of decorative detail

MOUNTING: Standard J-box or plaster ring.

WEIGHT: 5 lbs

SPEC GUIDE SAMPLE SPEC: 106-15-T5/40-120-SAL-FAUX

CAT#	SIZE	LAMPING	VOLT	FINISH	OPTION
<input type="checkbox"/> 106	<input type="checkbox"/> 15	<input type="checkbox"/> T5/40 <input type="checkbox"/> T5/55	<input type="checkbox"/> 120 <input type="checkbox"/> 277	<input type="checkbox"/> SAL <input type="checkbox"/> SB <input type="checkbox"/> CCP	<input type="checkbox"/> FAUX <input type="checkbox"/> IEM

