

UPDATED 3/15

**103-14 LED** Optional

**103-18 IEM LED** Optional

**FABRIC SHADE DRUM**

Design  
Sustainability  
Value



Shown with cream linen shade.

#### COMPANIONS



#### ECO INFO

**ENERGY:** Designed exclusively for compact fluorescent lamps using HPF electronic ballasts or LEDs.

**FABRIC SHADE:** Available with sustainability produced fabrics that are backed with a US made paper backing, that replaces the standard styrene backing. See OPTIONAL FABRICS on Pg. 2.

#### MATERIALS

- Fabric drum shade.
- White acrylic bottom lens.

#### FINISHES

**MW** Matte White

**CCP** Custom Color Painted finish

Paint finishes are low voc.

#### LAMPING

**CF:** 103-14: 2-CF13QTT, G24q base or 2-26TTT, Gx24q base.  
103-18: 2-26, 32 or 42WTTT, Gx24q base.

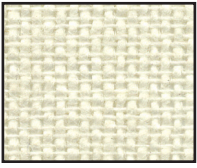
**LED:** 103-14 & 103-18: 2-GU24 base LED A-lamps, 12W, 1100 lumens each, 3000K, supplied.

#### BALLAST/DRIVER

**CF:** Integral electronic HPF, 120V/277V.

**LED:** Electronic driver is built into the lamp, 120V only.

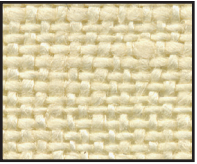
Dimmable to 10% with most incandescent dimmers.



**STANDARD FABRIC**  
Cream Linen

NOTE: All fabrics shown greater than actual size.

**OPTIONAL FABRICS:** Imported 100% flax linen.



VAN Vanilla

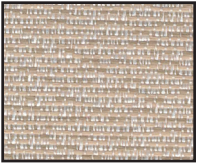


WHT White



OAT Oatmeal

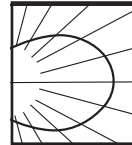
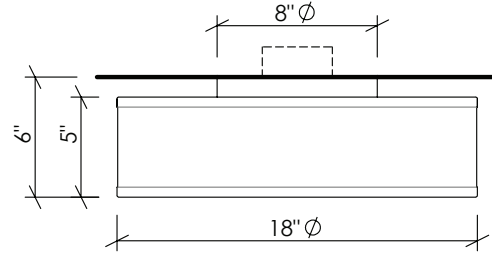
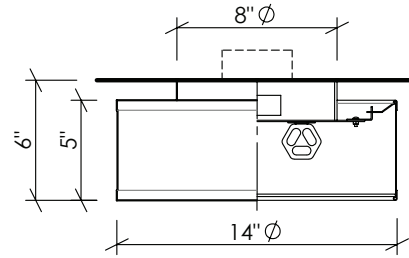
**OPTIONAL ECO-FABRICS:**



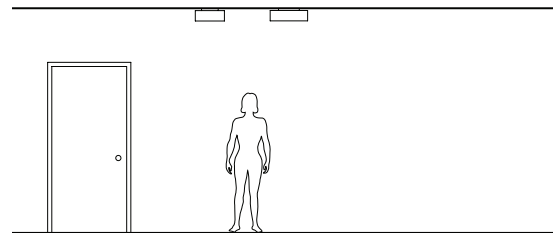
DOV  
Dove Polyester  
Washable 65% recycled content

Click **HERE** to learn more about shade fabrics

**103-14**  
**103-18**



**PHOTOMETRICS**  
Lighting Sciences Report 29922  
Fixture Efficiency: 68.0%



**OPTIONS**

**DIMMING:** Lutron & Advance dimming available.  
**LED:** Triac dimmable to 10%.

**EMERGENCY BATTERY PACK:** Remote mounted EBP for 103-14. Integral EBP available for 103-18, specify **IEM**. Not available for **LED**.

**FABRIC SHADE:** Standard, or default, shade is Cream Linen. Optional shade fabrics are shown above. Call factory for other fabrics.

**MOUNTING:** Standard J-box or plaster ring.

**WEIGHT:** 5 lbs

**VARIATIONS / MODIFICATIONS**

- Special finishes
- Special shade fabrics
- Addition of decorative detail

**SPEC GUIDE**

SAMPLE SPEC: 103-18-CF2/32-277-SAL-VAN-IEM

CAT#	SIZE	LAMPING	VOLT	FINISH	OPTION
<input type="checkbox"/> 103	<input type="checkbox"/> 14 <input type="checkbox"/> 18	<input type="checkbox"/> CF2/13 <input type="checkbox"/> CF2/26 <input type="checkbox"/> CF2/32 <input type="checkbox"/> CF2/42 <input type="checkbox"/> LED2/12	<input type="checkbox"/> 120 <input type="checkbox"/> 277 <input type="checkbox"/> 120DIM	<input type="checkbox"/> SAL <input type="checkbox"/> MW <input type="checkbox"/> CCP	<input type="checkbox"/> IEM <input type="checkbox"/> VAN (Vanilla) <input type="checkbox"/> WHT (White) <input type="checkbox"/> OAT (Oatmeal) <input type="checkbox"/> DOV (Dove Polyest)



Our fixtures are handcrafted here in the USA using the highest quality materials.

